

## PHEV BYD EV Car BYD Tang DMI Hybrid SUV Electric Or Petrol

Our Product Introduction

### Basic Information

- Place of Origin: China
- Brand Name: BYD
- Certification: VDA, TUV ,ISO
- Model Number: Tang DMI
- Minimum Order Quantity: 1
- Price: \$25000-28000/units
- Packaging Details: by sea, by trailer, rail via containers, LCL and RO-RO vessel
- Delivery Time: 7 working days
- Payment Terms: L/C, D/A, D/P, T/T, Western Union, MoneyGram
- Supply Ability: 1-10 units 15 - 20 working days, 10-30 units 20-30 working days, 30-50 units ≥30 working days

R·CHENG

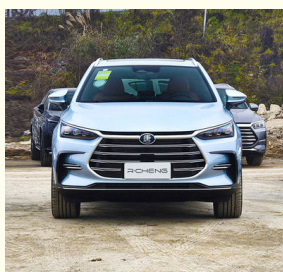


### Product Specification

- Product Name: Byd Tang DMI
- Length \* Width \* Height: 4870x1950x1725MM
- Body Structure: 6/7 Seater SUV
- Fuel: Electric Or Petrol
- Battery Type: Lithium Iron Phosphate Battery
- Vehicle Weight: 2153kg
- Tyre Specifications: 255/50 R20
- Motor Torque: 325n.m
- Battery Capacity: 45.8KWH
- Wheelbase: 2820mm
- Max Speed: 180km/h
- Energy Type: PHEV
- Sunroof: Panoramic Sunroof
- Highlight: **Fast 0.65H PHEV BYD EV Car, PHEV BYD EV Car Fast 0.65H,**



### More Images



for more products please visit us on [electriccars-ev.com](http://electriccars-ev.com)

## Product Description

## Byd Tang DMI

2022 New Energy Car New Version New Cars Gasoline BYD Tang DM-i Electric And Gas Car Hybrid SUV Phev SUV For Sale  
Production Configuration

Battery Capacity	45.8KWH
Charging Time	Fast 0.65H
Motor Power	160+200KW(Dual Motor)
MAX. Range	1200km(252KM Pure Electric )
MAX. Speed	180km/h
Vehicle Weight	2153kg
Tyre Specifications	255/50 R20
Length*Width*Height	4870x1950x1725mm
Driving Direction	Left-hand Drive
Body Structure	5 Doors and 7 Seats SUV
Battery Type	Lithium Iron Phosphate Battery
Steering Wheel Assistance	Electric Steering Wheel Assist
Light Type	LED Dragon Style
Battery Warranty	Life time warranty for battery cell
Motor Torque	231n.m
Wheelbase	2820mm
Seat	5
Front Suspension	McPherson lindependent Suspension
Rear Suspension	Multi-link independent suspension
Steering System	Electric
Parking Brake	Electric
Braking System	Front Disc +Rear Dsic
ABS	Yes
ESC	Yes
Radar	Front 4 + Rear 4
After The Camera	360°
Skylight	Sunroof
Steering Wheel	Multi-function
Seat Material	Leather
Driver Seat Adjustment	Electric
Passenger Seat Adjustment	Electric

Touch Screen

12.8' Touch screen

## Products Description



**High performance low energy consumption SUV**



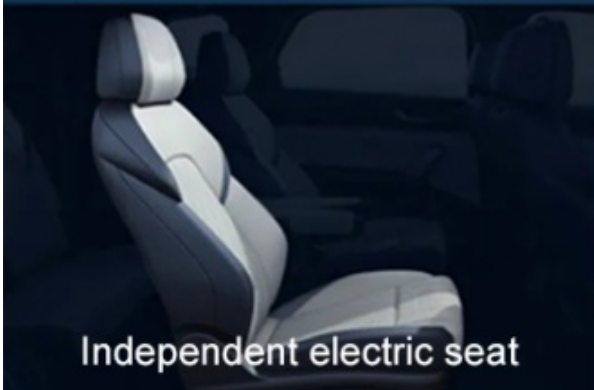
# S-CLASS LUXURY FLAGSHIP INTERIOR

Six or seven seats are available

## BIG SIX LAYOUT



One or two rows of seats massage function optional



Independent electric seat



Double cup holder

### **S-class luxury flagship interior**

One or two rows of seats massage function optional

Independent electric seat

Double cup holder

# BIG SEVEN LAYOUT



Super large adjustable space

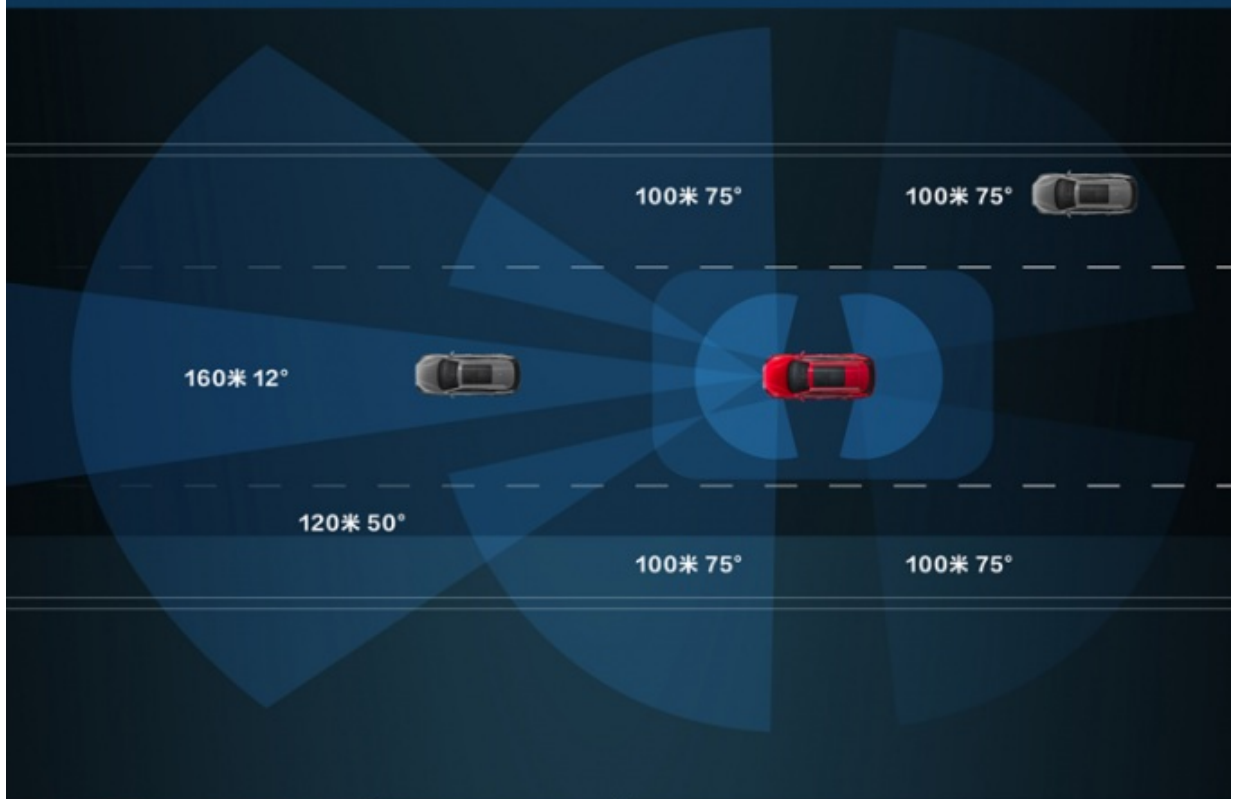


5G smart music cockpit

## **Big seven layout**

Super large adjustable space  
5G smart music cockpit

# DIPILOT INTELLIGENT DRIVING ASSISTANCE SYSTEM



DiLink 4.0(5G) intelligent  
networking system



3D holographic transparent  
imaging system

## Dipilot intelligent driving assistance system

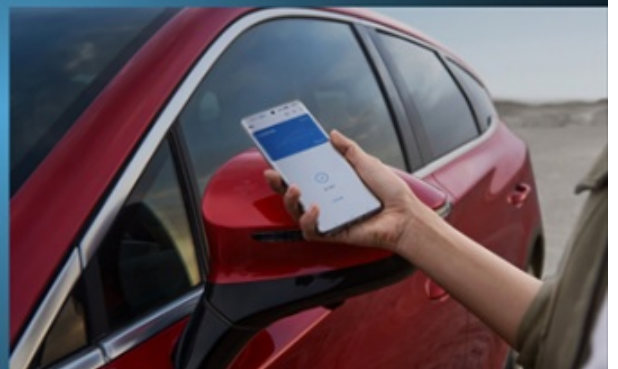
DiLink 4.0(5G) intelligent networking system  
3D holographic transparent imaging system



# VTOL MOBILE POWER STATION



W-HUD head-up display



Mobile phone/watch NFC car key

## ▲ (5G) intelligent network system

3D transparent image system

W-HUD head display

Mobile phone/watch NFC car key

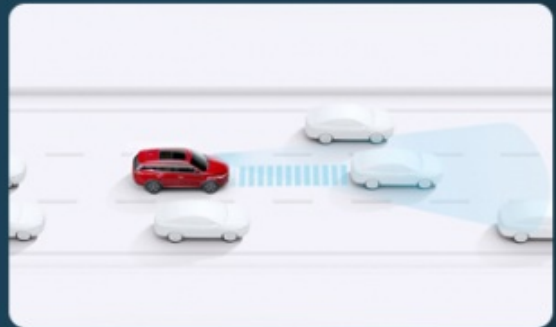
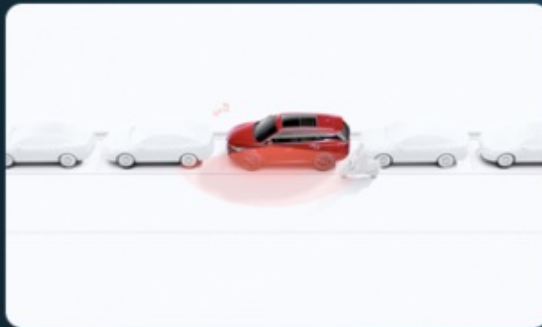
## ▲ VTOL mobile power station

Maximum external discharge power of 6kW

220V AC socket in car (2.2kW)

## Intelligent safety assisted driving

LCA parallel assist & BSD blind spot monitoring & AEB active brake  
ICC intelligent piloting & LKS active lane keeping



### Intelligent safety assisted driving

LCA parallel assist & BSD blind spot monitoring & AEB active brake  
ICC intelligent piloting & LKS active lane keeping

Production Color Show



# HOT SELLING COLORS SHOW



○ WHITE



● BLACK



● BLUE



● GRAY



● RED

**RUICHENG** Chengdu Ruicheng Automobile Service Co., Ltd.

☎ 19158810053

✉ [mango@ruichengauto.com](mailto:mango@ruichengauto.com)

🌐 [electriccars-ev.com](http://electriccars-ev.com)

Hall 5, No. 1, Yinhe Road, Damian Street Chengdu City, Sichuan Province, China